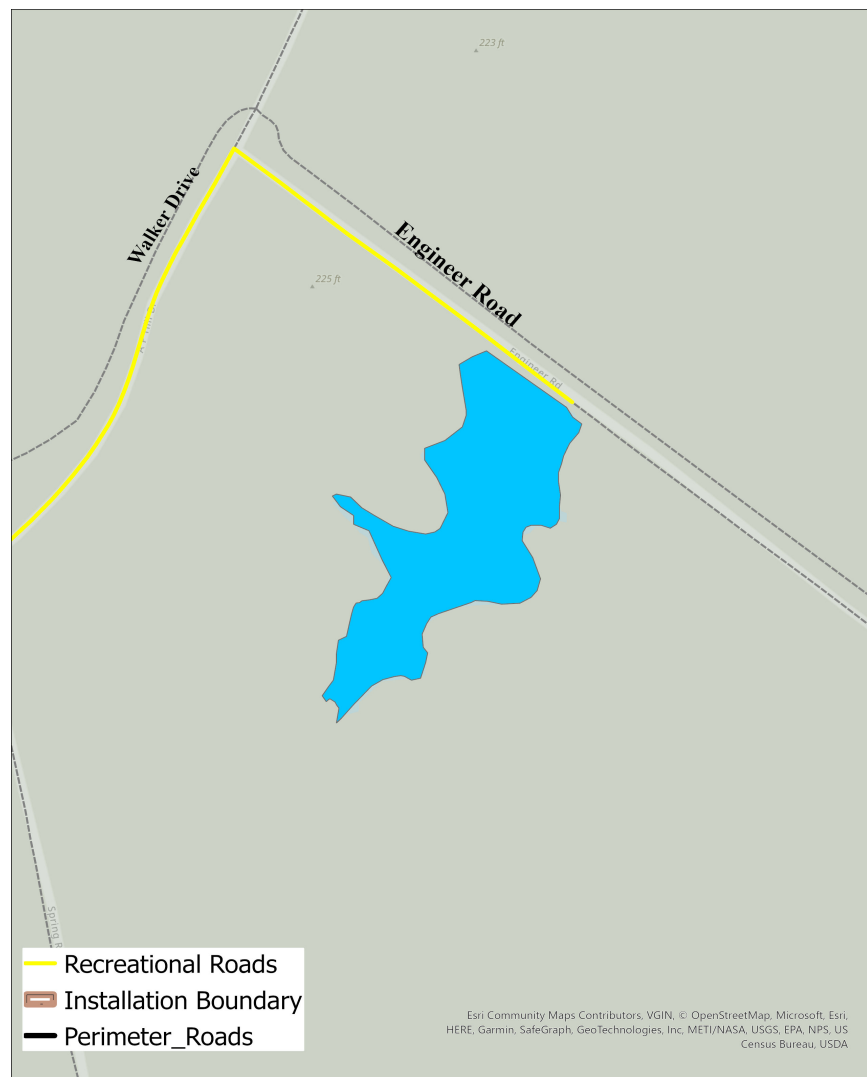


Fort A.P. Hill Recreational Fishing: Engineer Pond



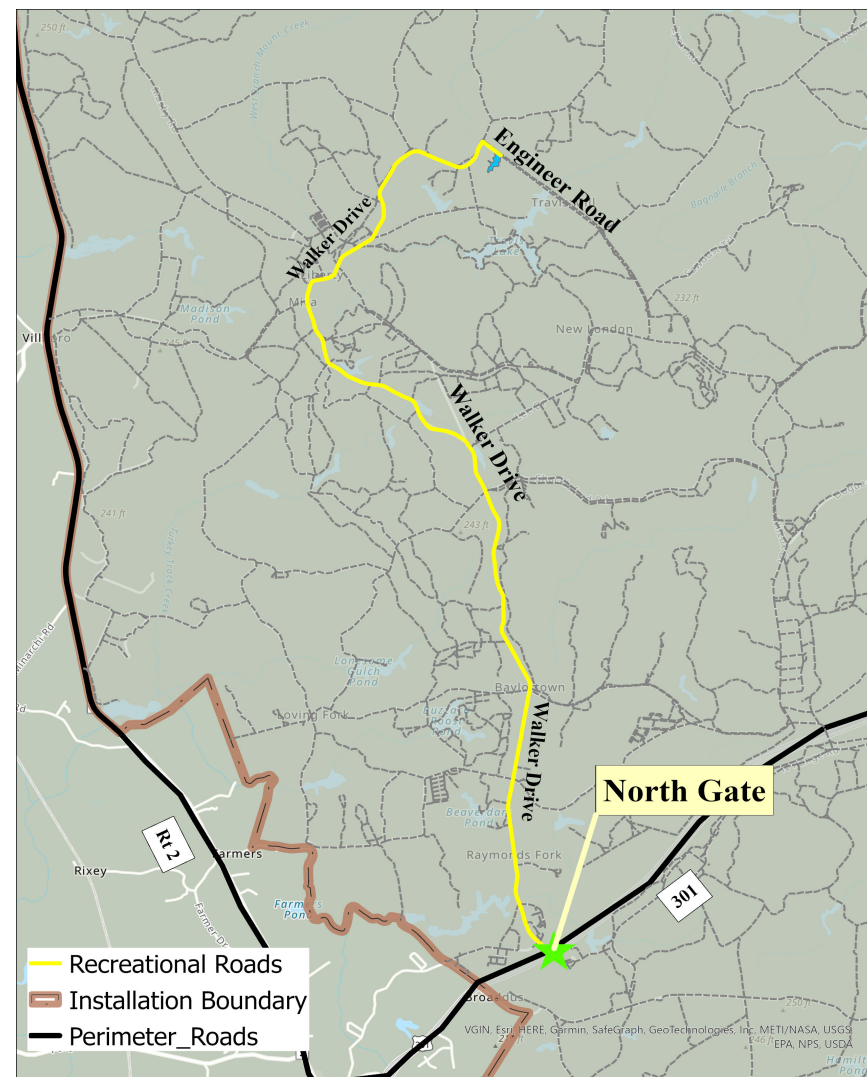
Important Phone Numbers

Fish and Wildlife Cell 1.....(540) 938-1231

Fish and Wildlife Cell 2.....(540) 728-1679

Visitor Control Center (VCC).....(804) 633-8585

iSportsman Webpage <https://walker.isportman.net>



Driving Instructions

- 1) From North Gate, follow Walker Drive for approximately 6.75 miles.
- 2) Turn right onto Engineer Road and continue for 0.15 miles.
- 3) Once you reach the pond, pull off and park next to the pond.