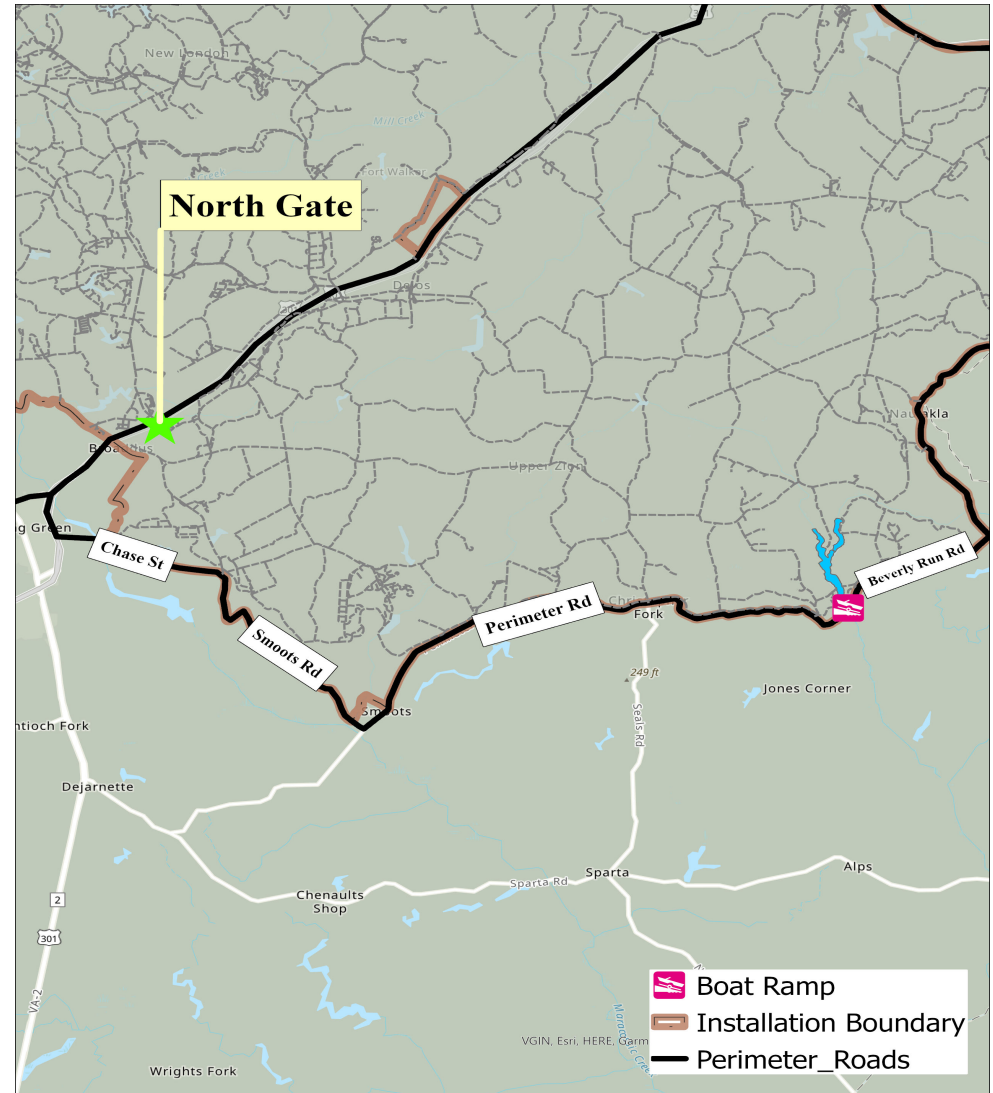
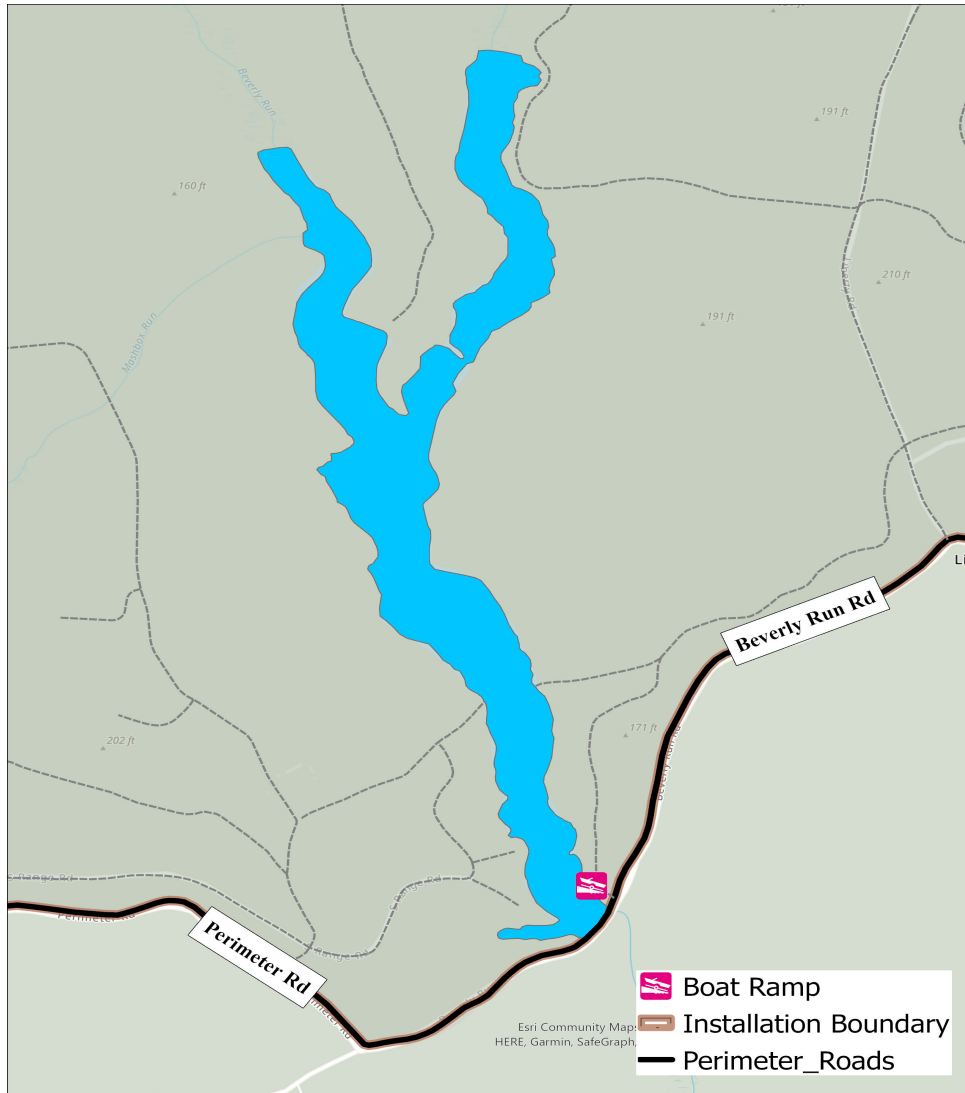


# Fort A.P. Hill Recreational Fishing: White's Lake



## Important Phone Numbers

Fish and Wildlife Cell 1.....(540) 938-1231  
 Fish and Wildlife Cell 2.....(540) 728-1679  
 Visitor Control Center (VCC).....(804) 633-8585  
 iSportsman Webpage <https://walker.isportman.net>

## Driving Instructions

- 1) From North Gate, head South on US Route 301 for 2.5 miles.
- 2) Turn Left onto State Route 619 (Chase Street) and continue for 2.5 miles.
- 3) Turn Left onto State Route 640 (Smoots Road) and continue for 2.25 miles.
- 4) Turn Left onto State Route 641 (Perimeter Road) and continue for 5.1 miles.
- 5) Turn Left onto State Route 618 (Beverly Run Rd) and continue for .4 miles. Parking will be at the boat ramp.

**NO ACCESS FROM INTERIOR OF FORT WALKER**